

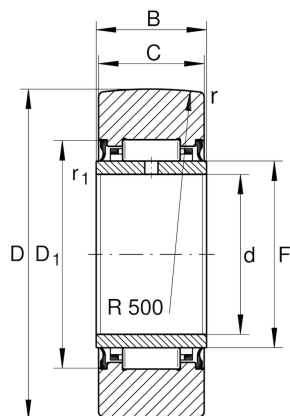
## NA2201-2RSR

Yoke type track roller

Schaeffler ID:  
0000276180000

Yoke type track rollers NA22...-2RSR,  
without axial guidance, lip seals on both  
sides

### Technical information



#### Main Dimensions & Performance Data

D	32 mm	Outside diameter
F	16 mm	Raceway diameter inner ring
C	13.8 mm	Width, outer ring
$C_{r w}$	7,500 N	Basic dynamic load rating, radial
$C_{0 r w}$	8,300 N	Basic static load rating, radial
$C_{u r w}$	1,290 N	Fatigue load limit, radial
$n_{D G}$	4,700 1/min	Speed on permanent grease lubrication
	67 g	Weight

#### Dimensions

d	12 mm	Bore diameter
B	14 mm	Width, inner ring
$D_{1 \min}$	22 mm	Minimum mounting dimension
$r_{\min}$	0.6 mm	Minimum chamfer dimension
$r_{1 \min}$	0.3 mm	Minimum chamfer dimension
R	500 mm	Radius of outer ring outside profile